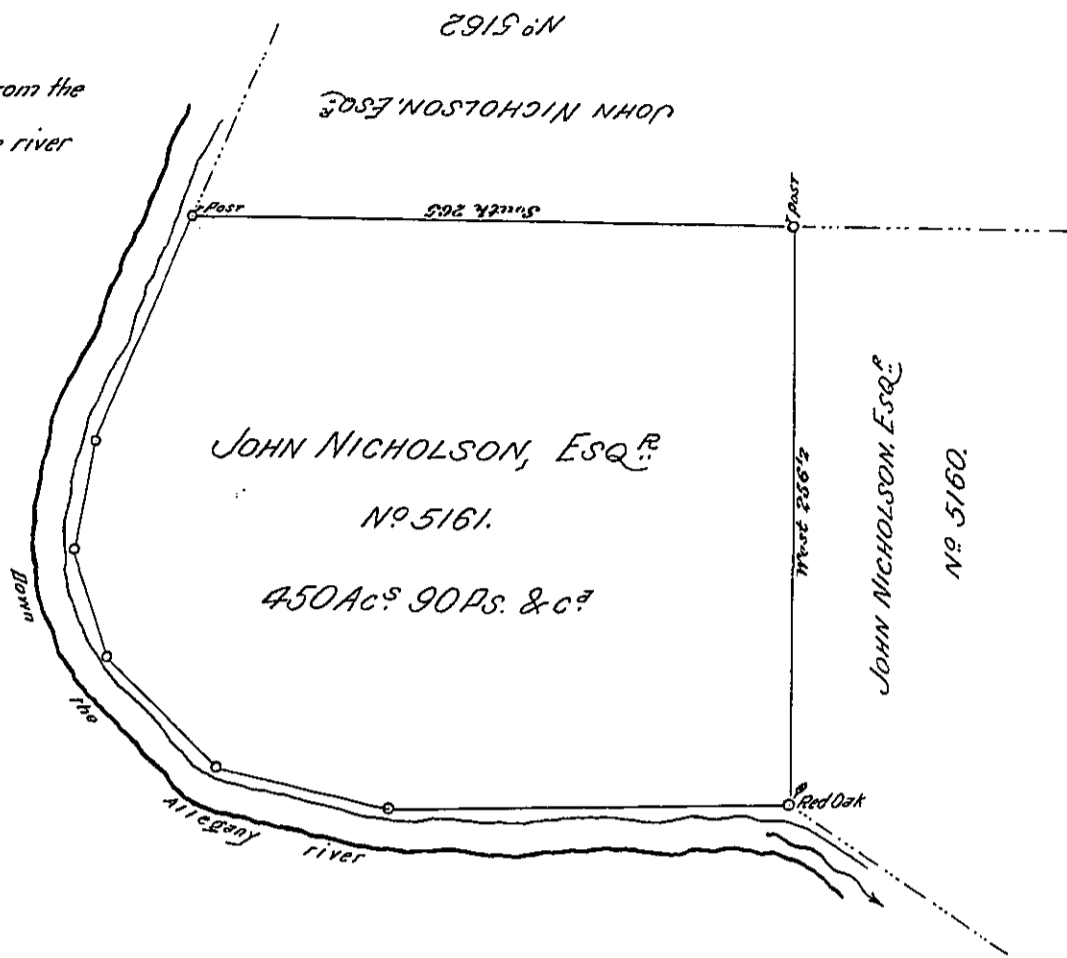


Courses & distances from the Post to the Red Oak down the river

- S. 66 E. 103
- S. 80 E. 46
- N. 74 E. 54
- N. 45 E. 68
- N. 13 E. 78
- North 176



In Pursuance of a warrant N^o 5161 dated Febr^y 15th, 1794, Surveyed November 22^d 1795, To John Nicholson, Esq^r the above described tract of land, situate on the Allegheny river in the late Purchase Lycoming County District N^o 6 containing four hundred and fifty nine acres and ninety perches and allowance of six P^t cent & c^o

Daniel Brodhead, Esq^r }
 Surveyor General }

Jn^o Brodhead, D.S.

IN TESTIMONY that the above is a copy of the original remaining on file in the Department of Internal Affairs of Pennsylvania, made conformably to an Act of Assembly approved the 16th day of February, 1833, I have hereunto set my Hand and caused the Seal of said Department to be affixed at Harrisburg, this

..... first day of June 1887.

John H. Steward
 Secretary of Internal Affairs